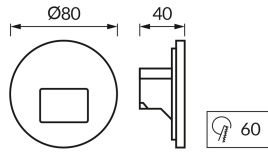
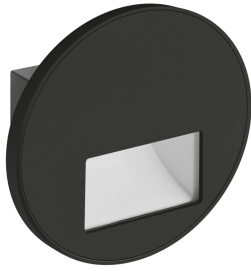
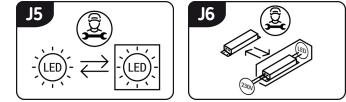


PRODUCT INFORMATION SHEET



Replaceability of light sources and/or control gears without product permanent damage



BASIC INFORMATION

Product name:	WEKTOR LED C 1,2W BLACK CCT
Ideus index:	04860
EAN barcode:	5901477348600
Colour :	Black
Materials:	Steel sheet, plastic
Height:	80 mm
Width:	80 mm
Depth:	40 mm
Box packaging:	100 pcs

REMARKS

Three-stage color temperature control (WW, NW, CW)

PRODUCT PARAMETERS

Power supply:	230V 50Hz
Power:	1,2 W
Dedicated light source:	SMD LED, in set
	Non-replaceable light source
	Do not use with a mains dimmer
Luminaire luminous flux:	50 lm
Light colour:	Warm white/neutral white/cold white
Luminous beam angle:	60°
Shelf life L70B50 in h:	35 000 h
Product offer the possibility of adjusting the illumination direction:	No
Light source luminous flux for a reference colour temperature:	58 lm
Colour temperature:	3000K/4000K/6000K
Colour rendering index Ra:	81
Electric shock protection class:	2
Degree of protection provided against intrusion dust, accidental contact and water:	IP20
	For indoor use
CE	Declaration of conformity